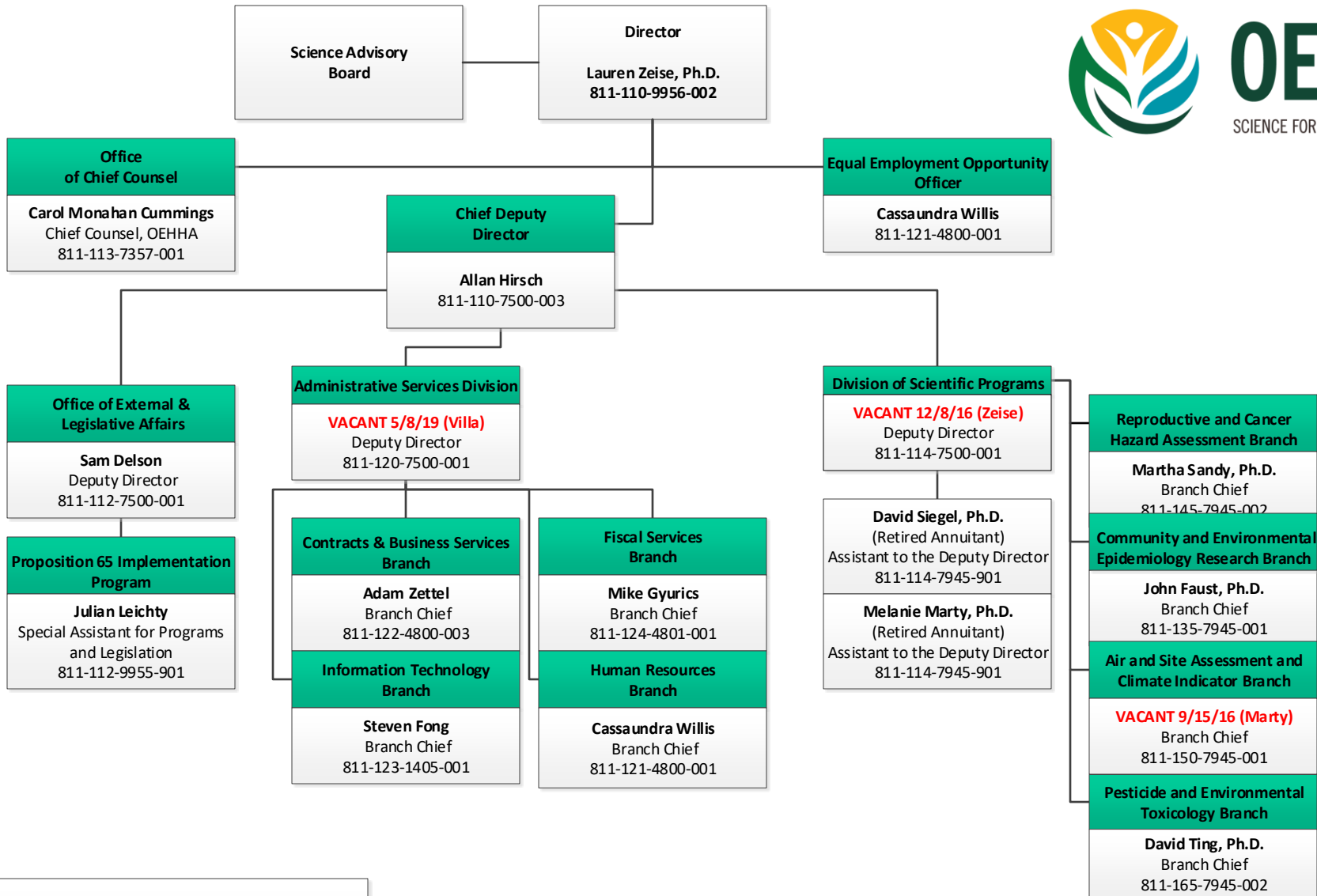


OFFICE OF ENVIRONMENTAL HEALTH HAZARD ASSESSMENT

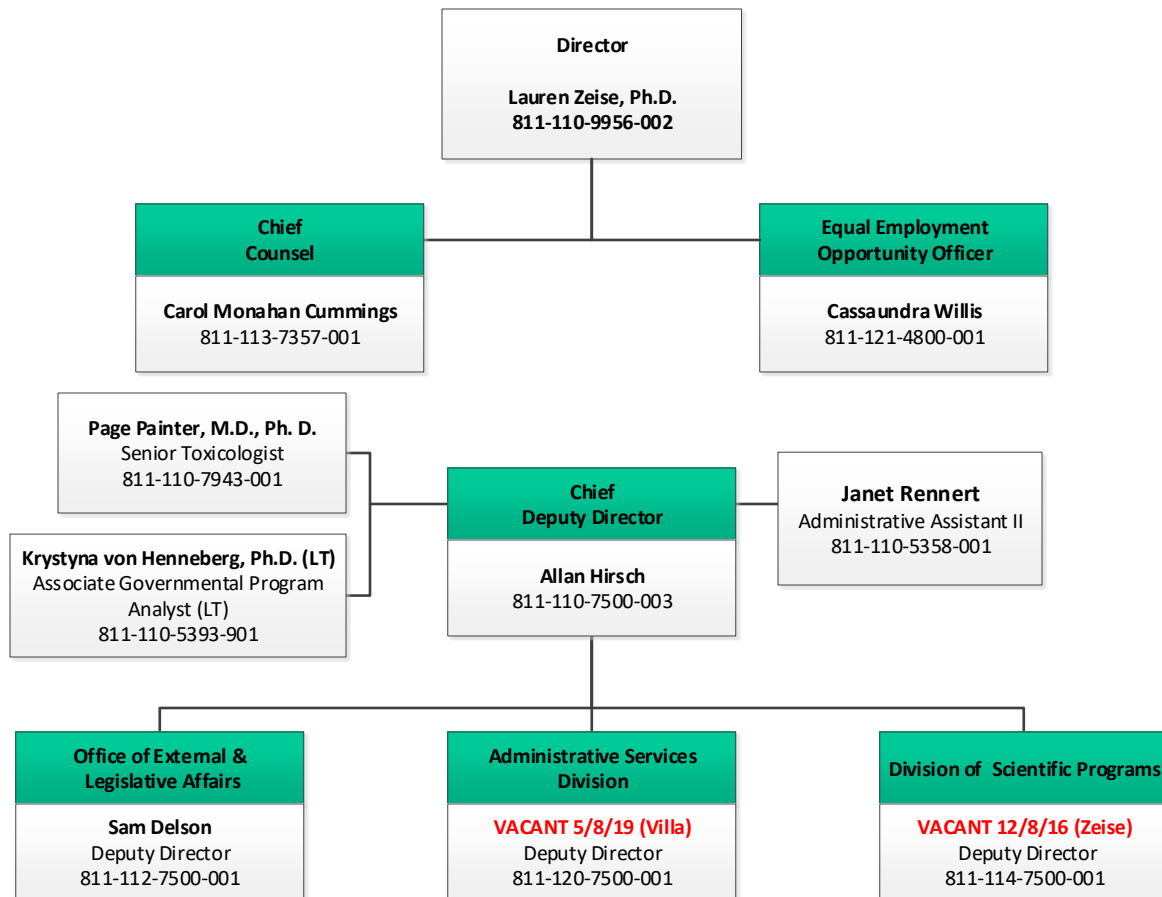
ORGANIZATIONAL CHART



Lauren Zeise, Ph.D.
Director

OFFICE OF ENVIRONMENTAL HEALTH HAZARD ASSESSMENT

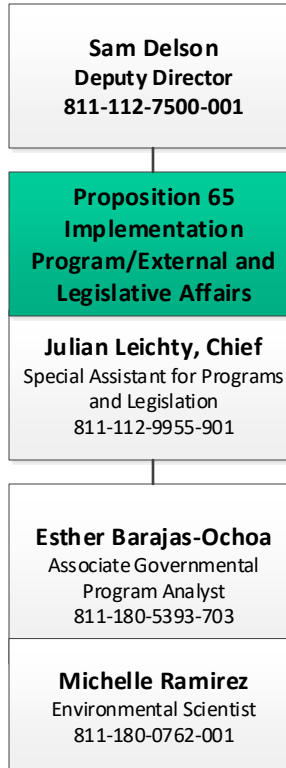
Executive Office



Lauren Zeise, Ph.D.
Director

OFFICE OF ENVIRONMENTAL HEALTH HAZARD ASSESSMENT

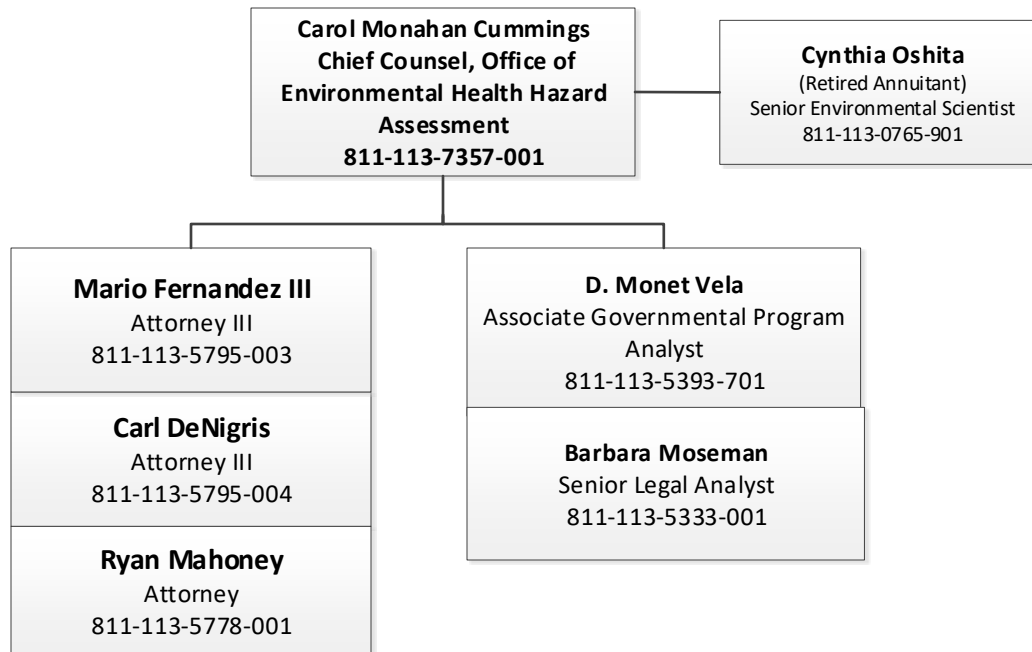
Office of External and Legislative Affairs



Sam Delson, Deputy Director

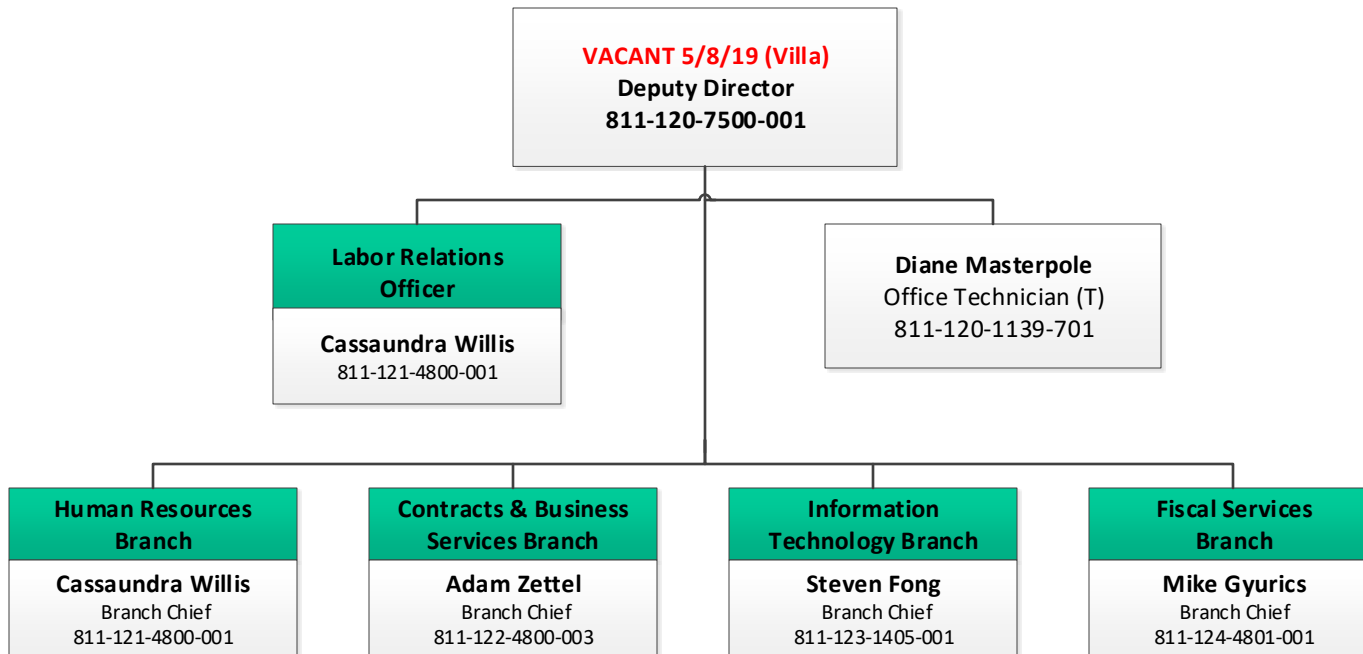
OFFICE OF ENVIRONMENTAL HEALTH HAZARD ASSESSMENT

Office of Chief Counsel



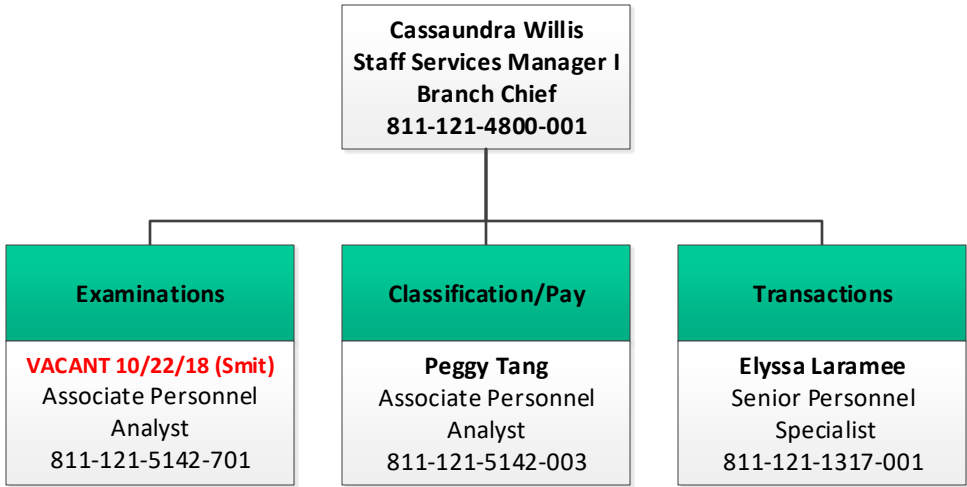
Carol Monahan Cummings, Chief Counsel,
OEHHA

OFFICE OF ENVIRONMENTAL HEALTH HAZARD ASSESSMENT
Administrative Services Division



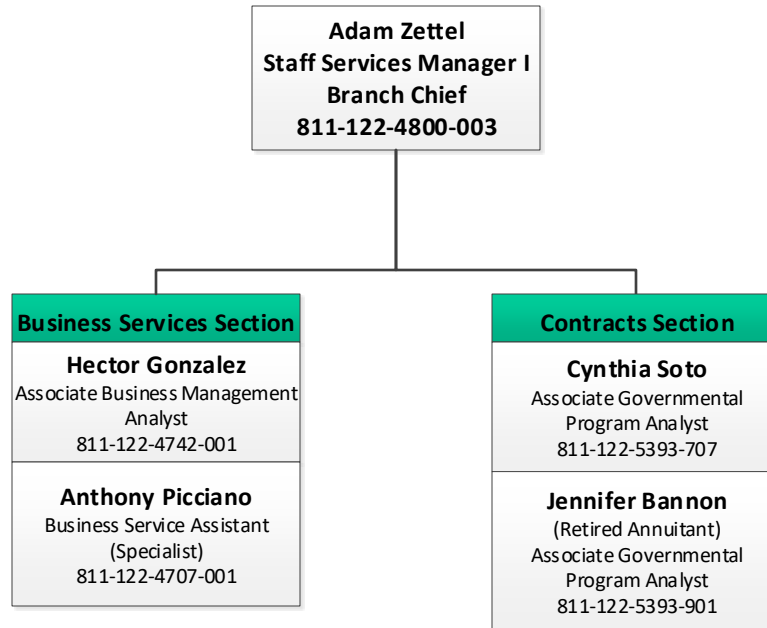
VACANT, Deputy Director

OFFICE OF ENVIRONMENTAL HEALTH HAZARD ASSESSMENT
Human Resources Branch



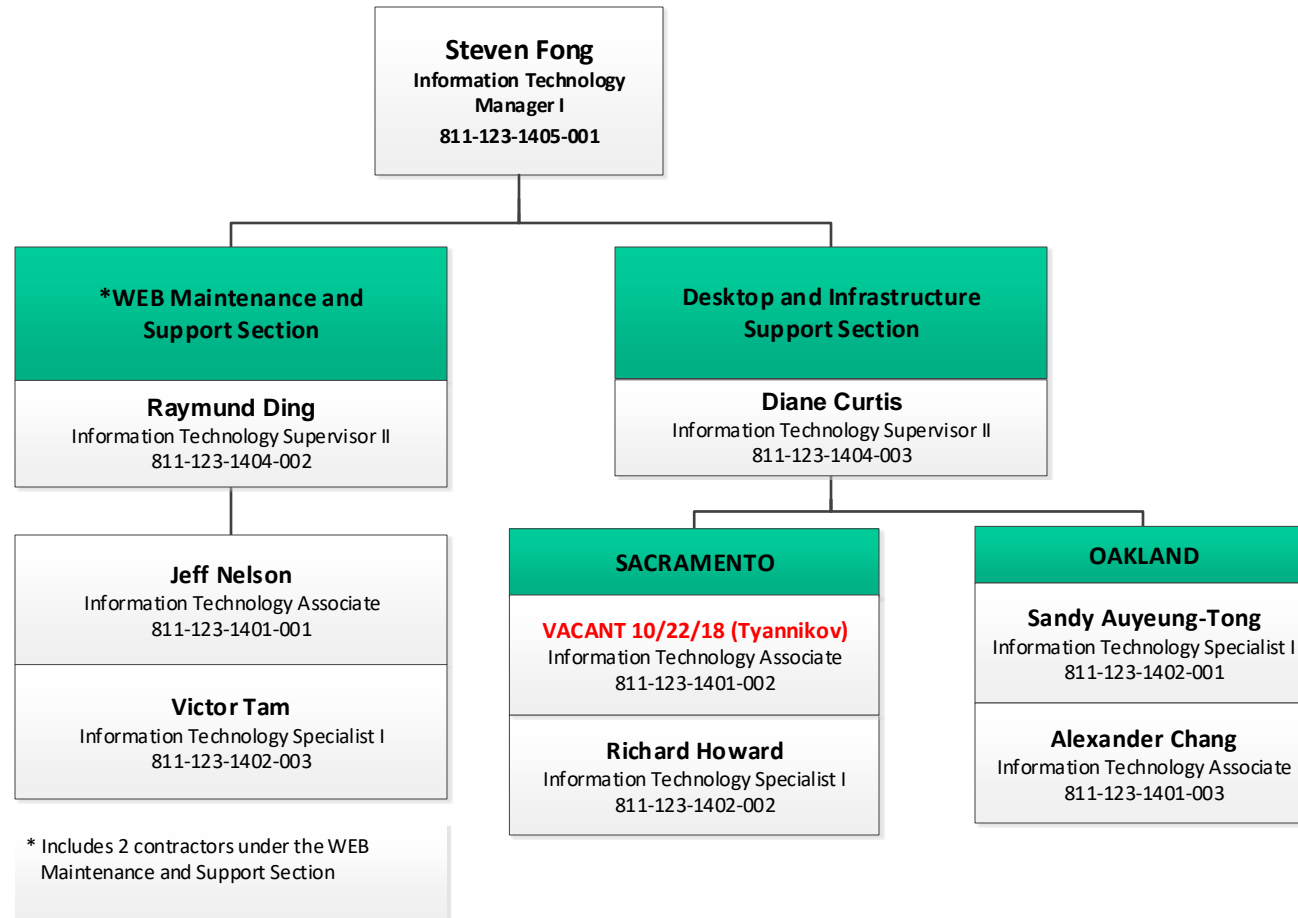
Cassandra Willis, Branch Chief

OFFICE OF ENVIRONMENTAL HEALTH HAZARD ASSESSMENT
Contracts and Business Services Branch



Adam Zettel, Branch Chief

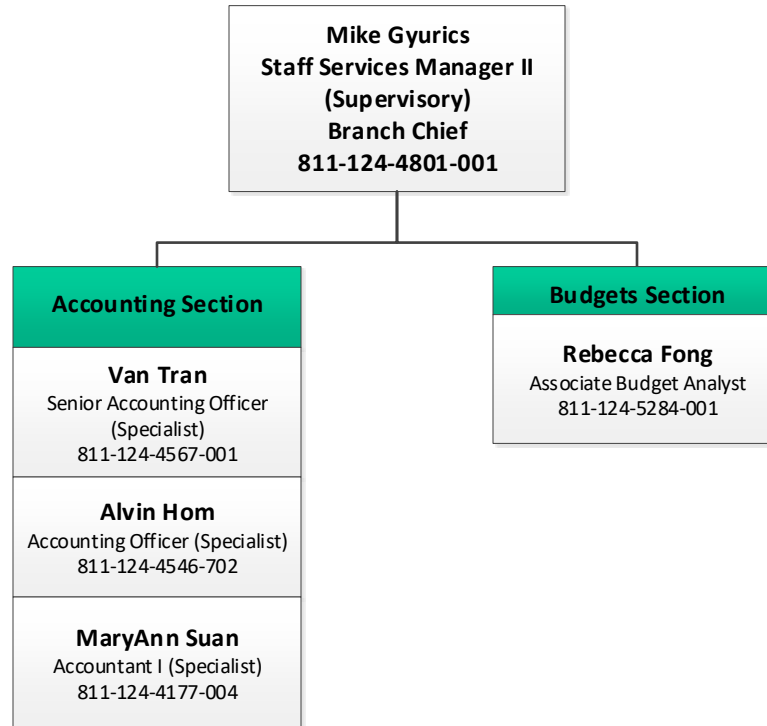
OFFICE OF ENVIRONMENTAL HEALTH HAZARD ASSESSMENT
Information Technology Branch



Steven Fong, Branch Chief

OFFICE OF ENVIRONMENTAL HEALTH HAZARD ASSESSMENT

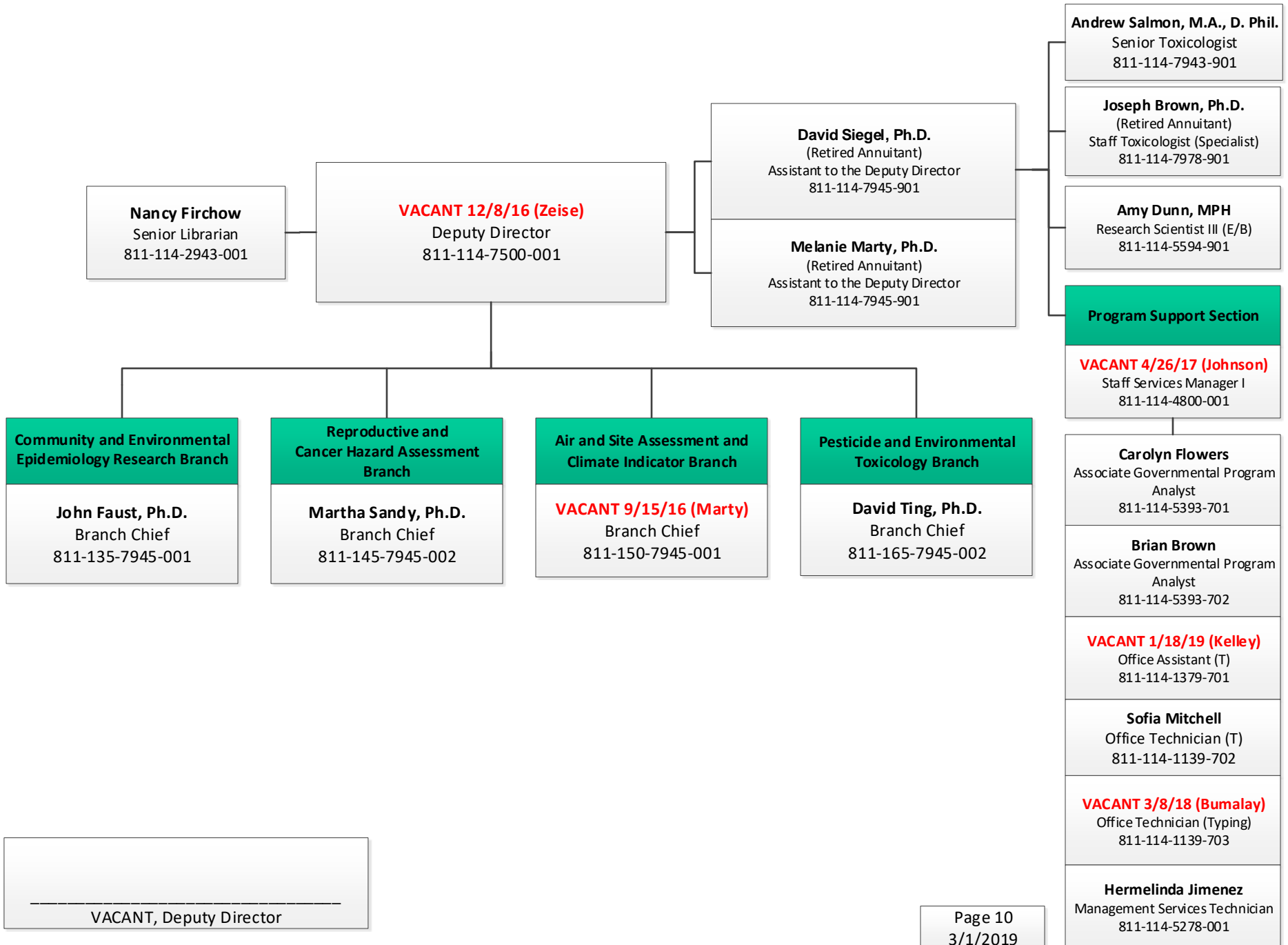
Fiscal Services Branch



Mike Gyurics, Branch Chief

OFFICE OF ENVIRONMENTAL HEALTH HAZARD ASSESSMENT

Division of Scientific Programs



OFFICE OF ENVIRONMENTAL HEALTH HAZARD ASSESSMENT

Community and Environmental Epidemiology Research Branch

John Faust, Ph.D.
 Supervising Toxicologist (Managerial)
 Branch Chief
 811-135-7945-001

Deldi Reyes, M.S.
 *Environmental Program
 Manager I (Supervisory)
 811-130-0756-001

Community Assessment and Research Section

VACANT 1/4/16 (Faust)
 Senior Toxicologist
 811-135-7943-002

Walker Wieland
 Research Scientist II (Physical/Engineering Sciences)
 811-130-5588-001

Komal Bangia, MPH (.8)
 Research Scientist II (E/B)
 811-135-5582-001

Laura August, MPH
 Research Scientist III (E/B)
 811-130-5594-001

Shankar Prasad, M.B.B.S.
 Staff Toxicologist (Specialist)
 811-130-7978-036

Andrew Slocombe, MS
 Research Scientist III (E/B)
 811-130-5594-002

Angelica Ruiz (LT)
 Research Scientist I (Social/Behavioral Sciences) (LT)
 811-130-5580-901

811-130 Sacramento
 811-135 Oakland

Community Health and Environmental Impacts Section

VACANT 7/1/16
 Research Scientist IV (E/B)
 811-135-5609-001

Amy Budahn, MPH
 Senior Environmental Scientist (Specialist)
 811-135-0765-001

Laurel Plummer, Ph.D.
 Staff Toxicologist (Specialist)
 811-130-7978-038

Karen Riveles Carrera, Ph.D., MPH
 Staff Toxicologist (Specialist)
 811-130-7978-040

John Faust, Ph.D., Branch Chief

Air and Climate Epidemiology Section

Rupa Basu, MPH, Ph.D., Chief
 Research Scientist
 Supervisor I (E/B)
 811-135-5643-001

Xiangmei Wu, Ph.D.
 Research Scientist III (E/B)
 811-135-5594-009

Dharshani Pearson, MPH (.8)
 Research Scientist I (E/B)
 811-135-5577-004

Rachel Broadwin, MPH
 Research Scientist III (E/B)
 811-135-5594-002

Keita Ebisu, Ph.D.
 Research Scientist III (E/B)
 811-135-5594-003

Brian Malig, MPH
 Research Scientist III (E/B)
 811-135-5594-008

Carolina Balazs, Ph.D. (.6) (LT)
 Research Scientist III (E/B) (LT)
 811-135-5594-901

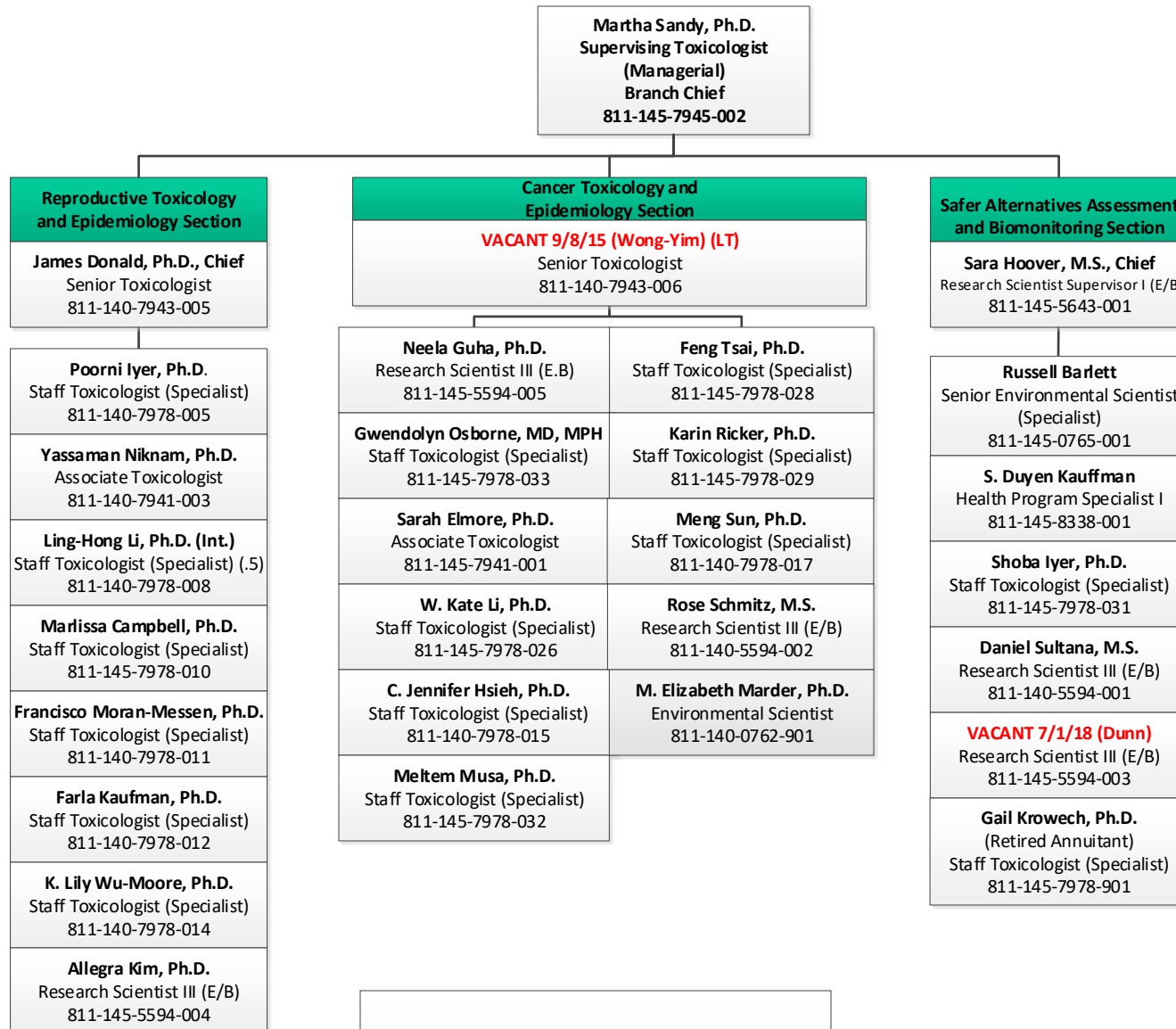
VACANT 7/1/16
 Staff Toxicologist (Specialist)
 811-135-7978-009

VACANT 7/1/16
 Staff Toxicologist (Specialist)
 811-135-7978-010

*On Loan to CalEPA

OFFICE OF ENVIRONMENTAL HEALTH HAZARD ASSESSMENT

Reproductive and Cancer Hazard Assessment Branch

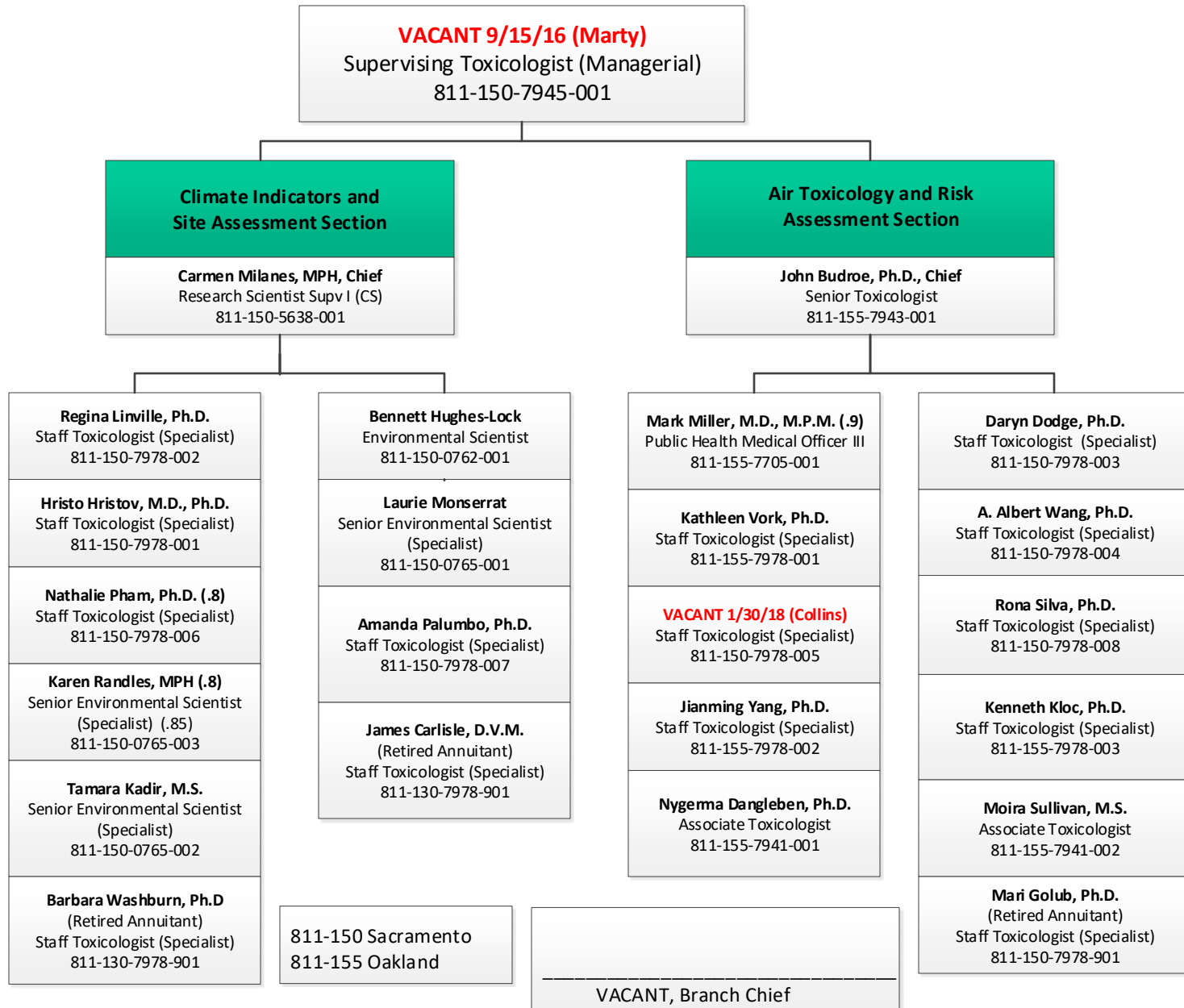


Martha Sandy, Ph.D., Branch Chief

811-140 Sacramento
811-145 Oakland

OFFICE OF ENVIRONMENTAL HEALTH HAZARD ASSESSMENT

Air and Site Assessment and Climate Indicators Branch



OFFICE OF ENVIRONMENTAL HEALTH HAZARD ASSESSMENT

Pesticide and Environmental Toxicology Branch

David Ting, Ph.D.
Supervising Toxicologist
(Managerial)
Branch Chief
811-165-7945-002



811-160 Sacramento
811-165 Oakland

David Ting, Ph.D., Branch Chief